



INDOFINE Chemical Company, Inc.

121 Stryker Lane, Bldg. 30, Suite 1 • Hillsborough, NJ 08844 • U.S.A.

Phone: (908) 359-6778 • FAX: (908) 359-1179

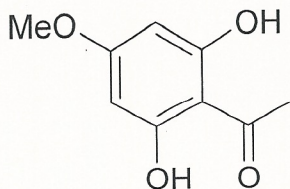
website: www.indofinechemical.com

e-mail: chemical@indofinechemical.com

CERTIFICATE OF ANALYSIS

Cat. No.: 19-858

<u>Product:</u>	2',6'-Dihydroxy-4'-methoxy acetophenone
<u>CAS No.:</u>	[7507-89-3]
<u>Lot No.:</u>	0501004
<u>Appearance:</u>	Pale yellow powder
<u>Molecular Formula:</u>	C ₉ H ₁₀ O ₄
<u>Molecular Weight:</u>	182.18
<u>Melting Point:</u>	142.5-145°C
<u>Solubility:</u>	Soluble in chloroform:methanol (4:1)
<u>TLC:</u>	Chloroform:Ethyl acetate (9:1)
<u>NMR Spectrum:</u>	Enclosed
<u>IR Spectrum:</u>	Enclosed
<u>Storage:</u>	Cool dry place
<u>Purity (HPLC):</u>	99.1%





INDOFINE Chemical Company, Inc.

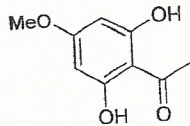
121 Stryker Lane, Bldg. 30, Suite 1 • Hillsborough, NJ 08844 • U.S.A.

Phone: (908) 359-6778 • FAX: (908) 359-1179

website: www.indofinechemical.com

e-mail: chemical@indofinechemical.com

HPLC ANALYSIS



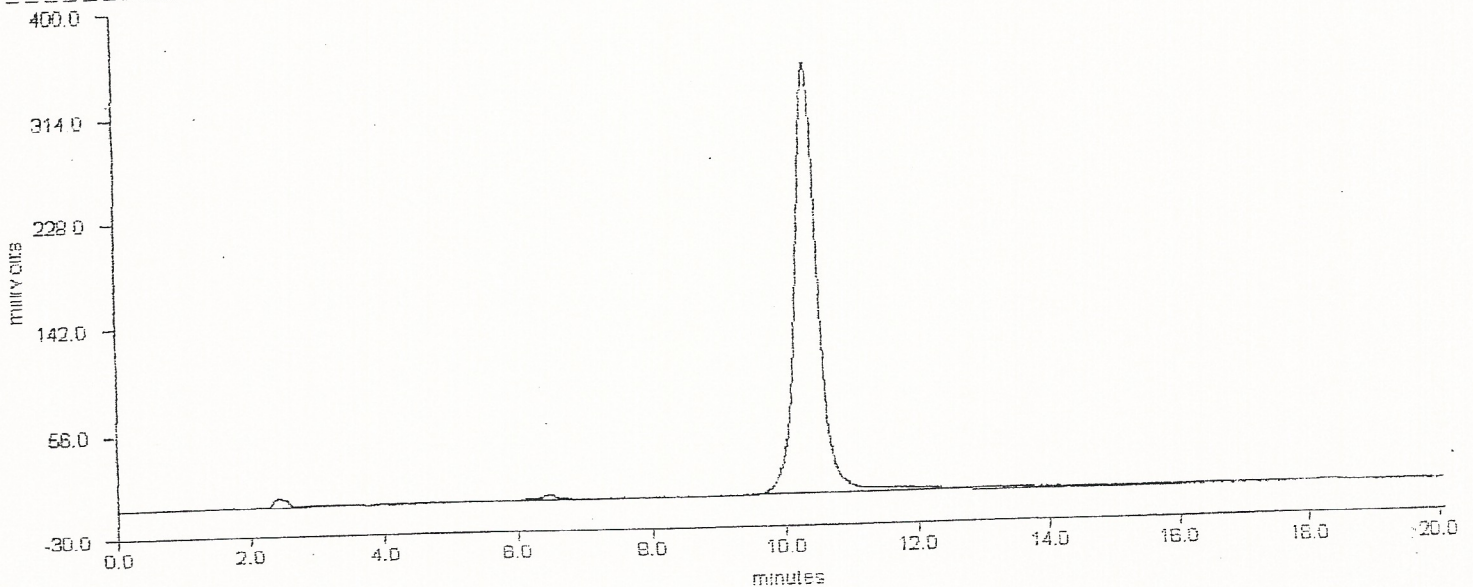
Catalog no.: 19-858
Product name: 2',6'-Dihydroxy-4'-methoxyacetophenone
Lot No.: 0501004

MOBILE PHASE : WATER:METHANOL(50:50)
FLOW RATE : 1ml/min

WAVE LENGTH: 254 nm
COLUMN : C18

DELTA CHROMATOGRAPHY DATA SYSTEM

STRIPCHART PLOT FOR CHROMATOGRAM - c:\deltaw\data\np-018.raw



DELTA CHROMATOGRAPHY DATA SYSTEM

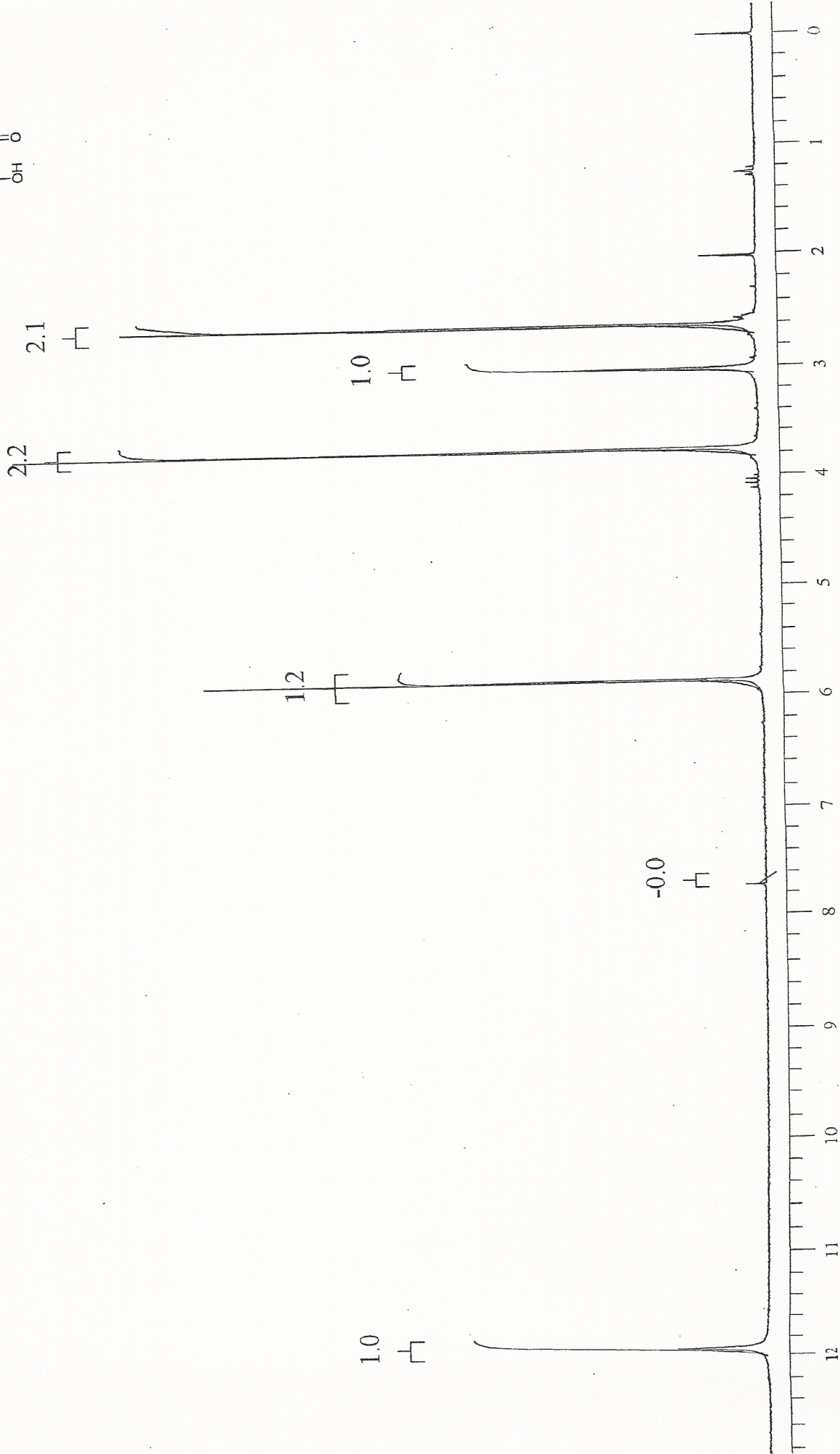
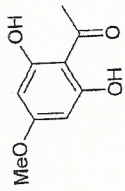
LISTING PEAK TABLE FOR CHROMATOGRAM - c:\deltaw\data\np-018.raw.RAW

#	Type Name	Ret.Time	Area(uVSec)	Height(mV)	Area Percent
1	MM	2.43	54019	5.6	0.6
2	MM	6.46	28080	2.7	0.3
3	BB	10.35	8560617	352.5	99.1



INDOFINE Chemical Company, Inc.
121 STRYKER LANE
BLDG. 30, SUITE 1
HILLSBOROUGH, NJ 08844

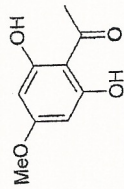
Catalog no.: 19-858
Product name: 2',6'-Dihydroxy-4'-methoxyacetophenone
Lot No.: 0501004



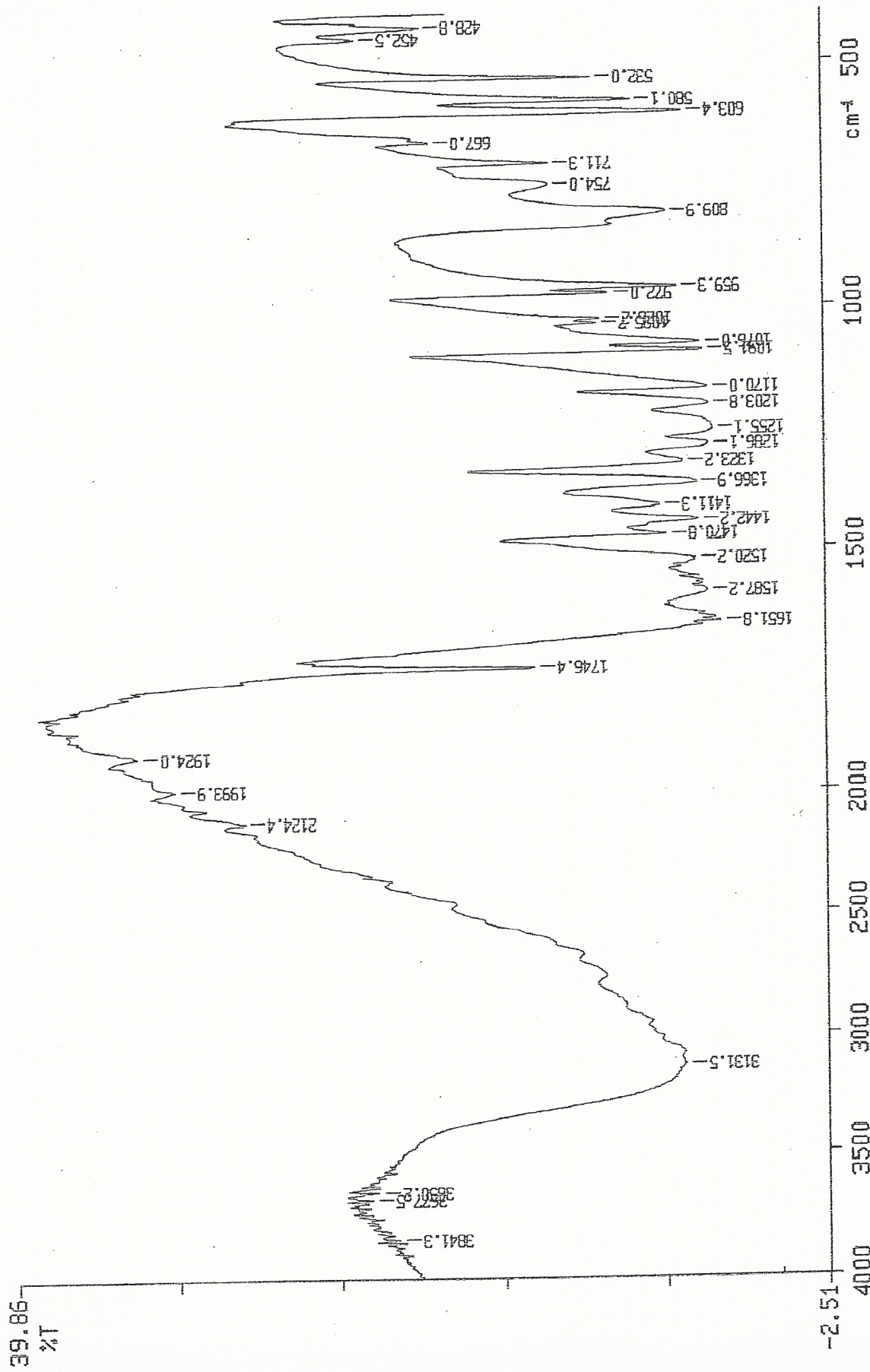


INDOFINE Chemical Company, Inc.
121 STRYKER LANE
BLDG. 30, SUITE 1
HILLSBOROUGH, NJ 08844

Catalog no.: 19-858
Product name: 2',6'-Dihydroxy-4'-methoxyacetophenone
Lot No.: 0501004



PERKIN ELMER



X: 1 scan, 4.0cm-1